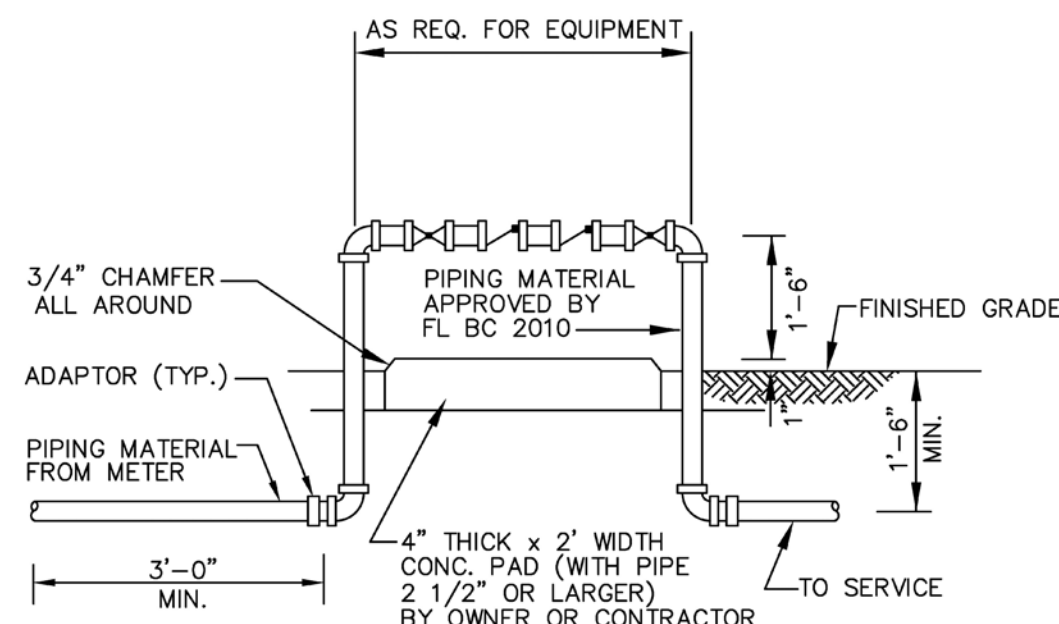


VALVE BOX SETTINGS

ENGINEERING STANDARDS 2025

REVISIONS	BY	DATE	ENGINEERING DIVISION	VALVE BOX SETTINGS
	S.S.	04-2005	CITY OF POMPAÑO BEACH	
				DATE: MAY 2022
				DWG. NO. 102-1
			SCALE: N.T.S.	

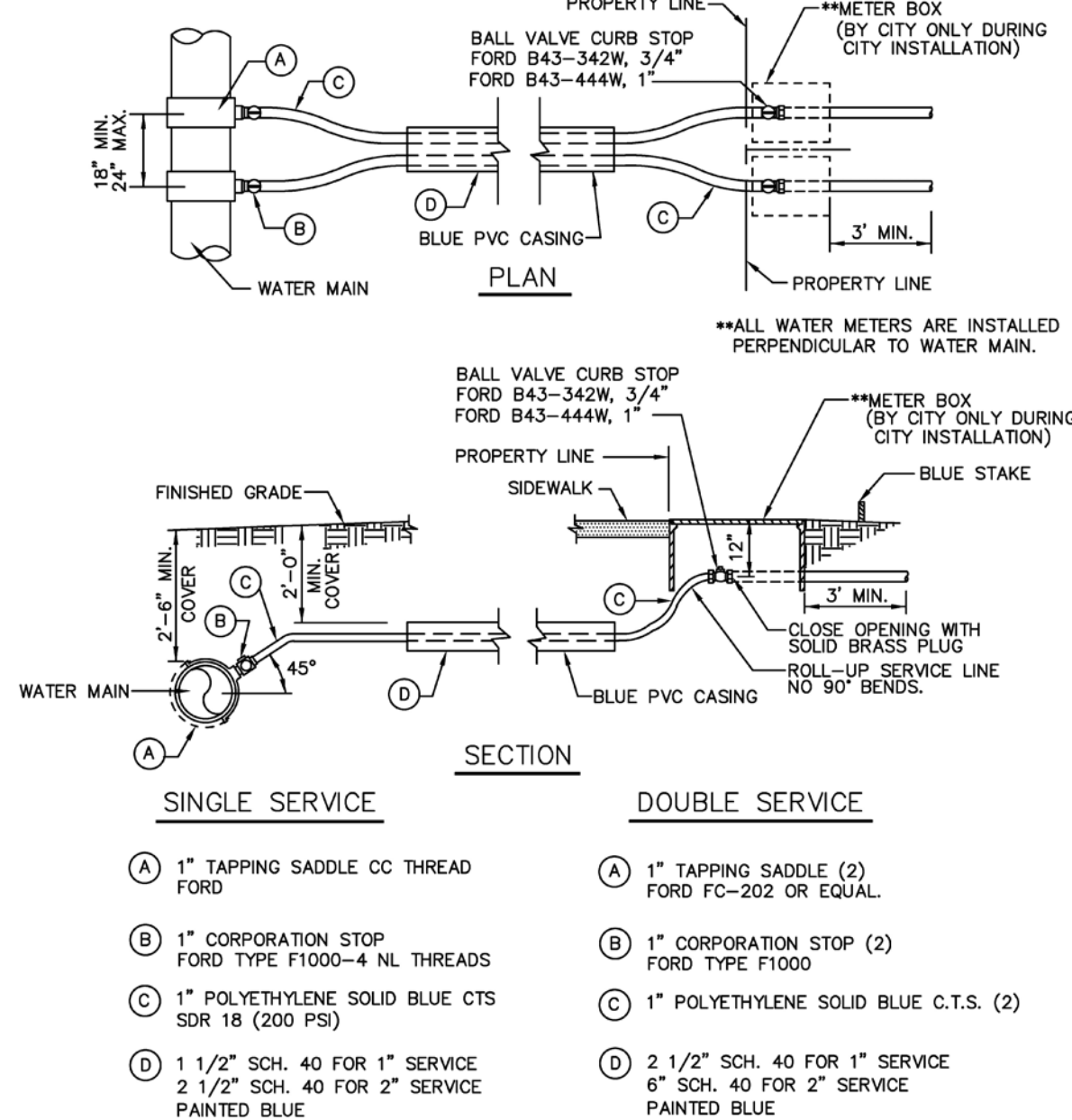


BACKFLOW PREVENTER

USE MEGALUGS AT ALL PIPE JOINTS 3" AND LARGER
PLEASE SEE METER INSTALL DIMENSION LIST ON STANDARD NO. 106-4
SMALL UNITS UNI-STRUT SUPPORT

ENGINEERING STANDARDS 2025

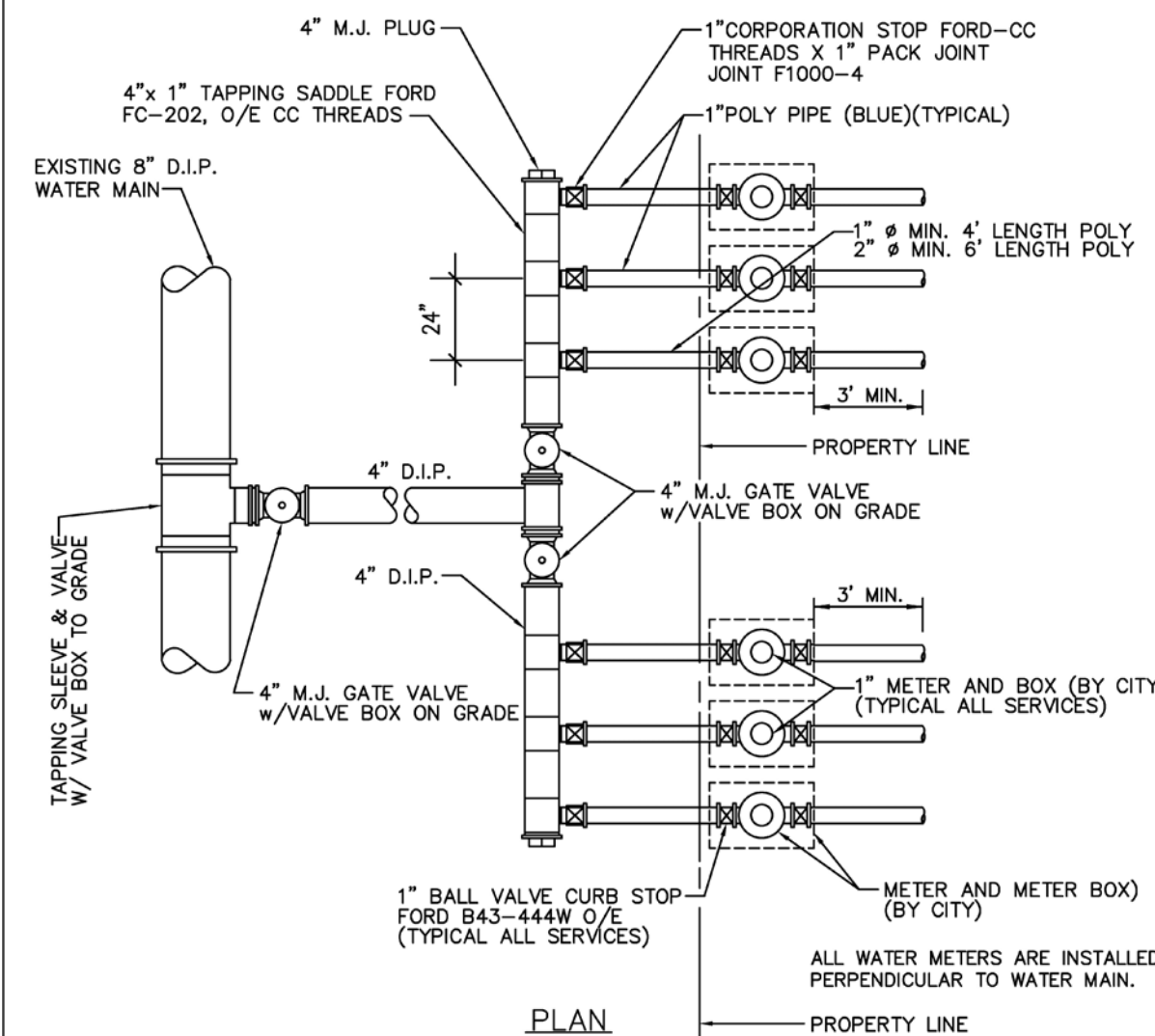
REVISIONS	BY	DATE	ENGINEERING DIVISION	BACKFLOW PREVENTER
	T.W.	04-2008	CITY OF POMPAÑO BEACH	
	S.S.	03-2009		
	S.S.	11-2012		DATE: MAY 2022
	S.S.	01-2013		DWG. NO. 106-1
			SCALE: N.T.S.	



TYPICAL 3/4" AND 1" WATER SERVICE

ENGINEERING STANDARDS 2025

REVISIONS	BY	DATE	ENGINEERING DIVISION	TYPICAL 1" WATER SERVICE
	T.W.	11-2007	CITY OF POMPAÑO BEACH	
	S.S.	05-2012		
	S.S.	11-2015		DATE: MAY 2022
	A.S.	08-2021		DWG. NO. 107-1
			SCALE: N.T.S.	

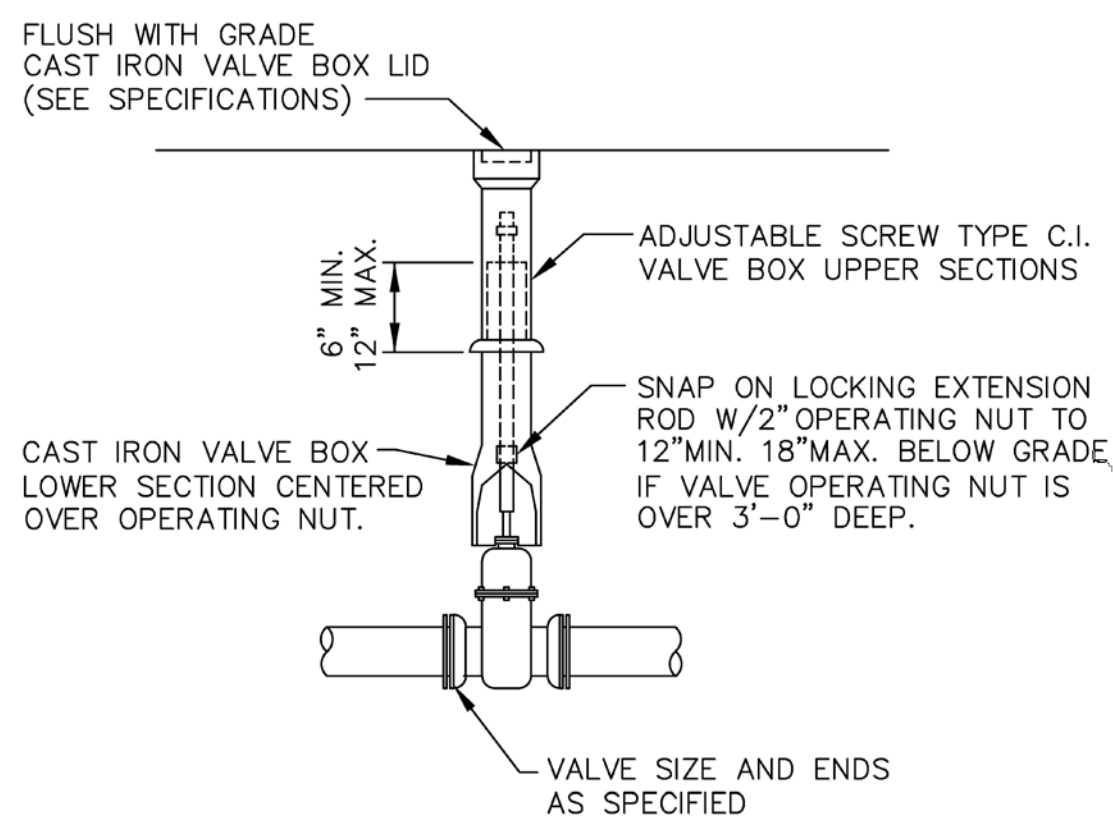


TYPICAL METER BANK

USE MEGALUGS AT ALL PIPE JOINTS
ALL D.I.P. TO BE PAINTED BLUE
ON THE TOP HALF OF PIPE.

ENGINEERING STANDARDS 2025

REVISIONS	BY	DATE	ENGINEERING DIVISION	TYPICAL METER BANK
	T.W.	02-09	CITY OF POMPAÑO BEACH	
	S.S.	05-2011		
	S.S.	11-2012		DATE: MAY 2022
				DWG. NO. 113-1
			SCALE: N.T.S.	



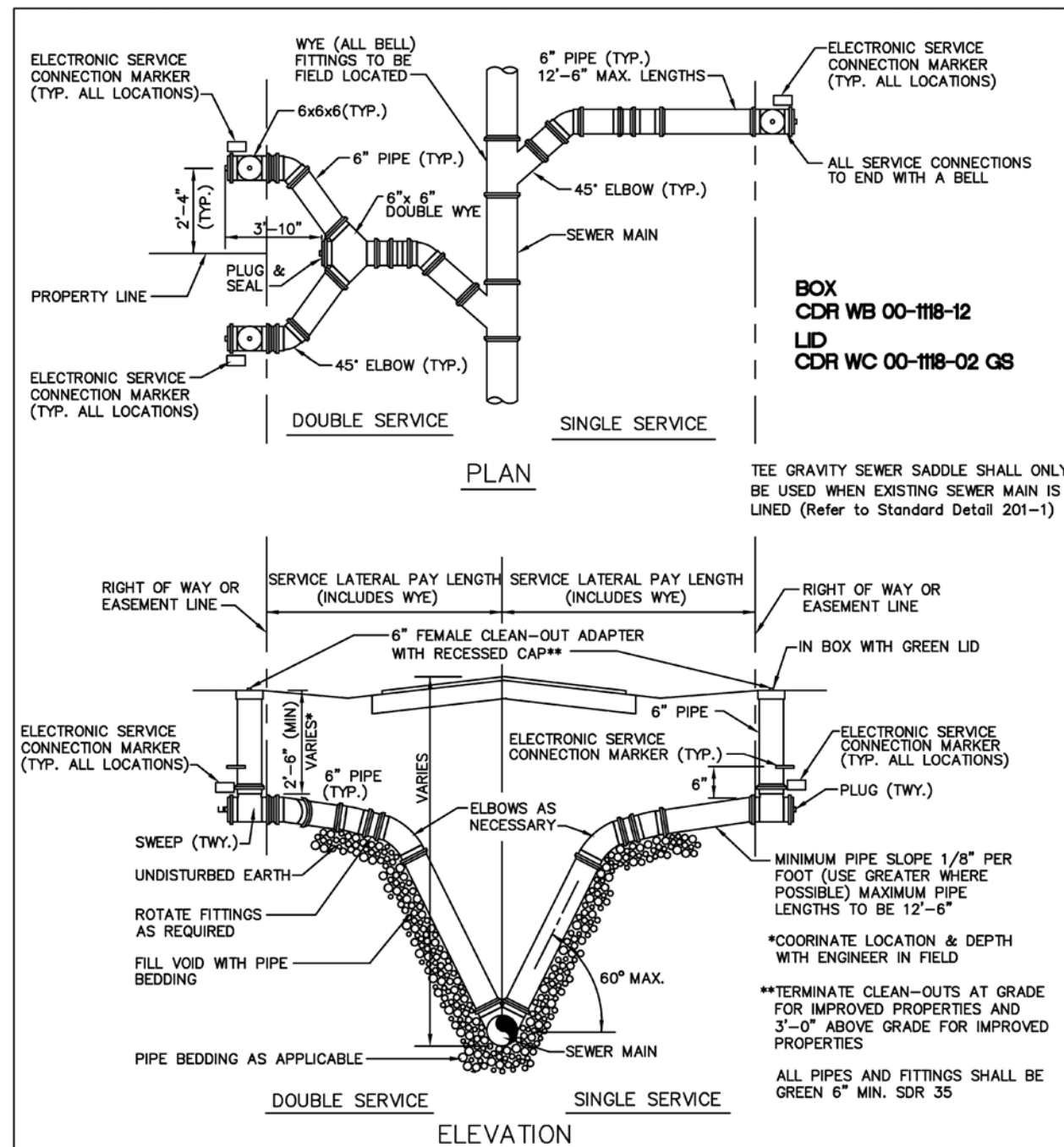
GATE OR PLUG VALVE SETTING

USE MEGALUGS AT ALL PIPE JOINTS

ALL D.I.P. TO BE PAINTED
BLUE ON TOP HALF OF PIPE.

ENGINEERING STANDARDS 2025

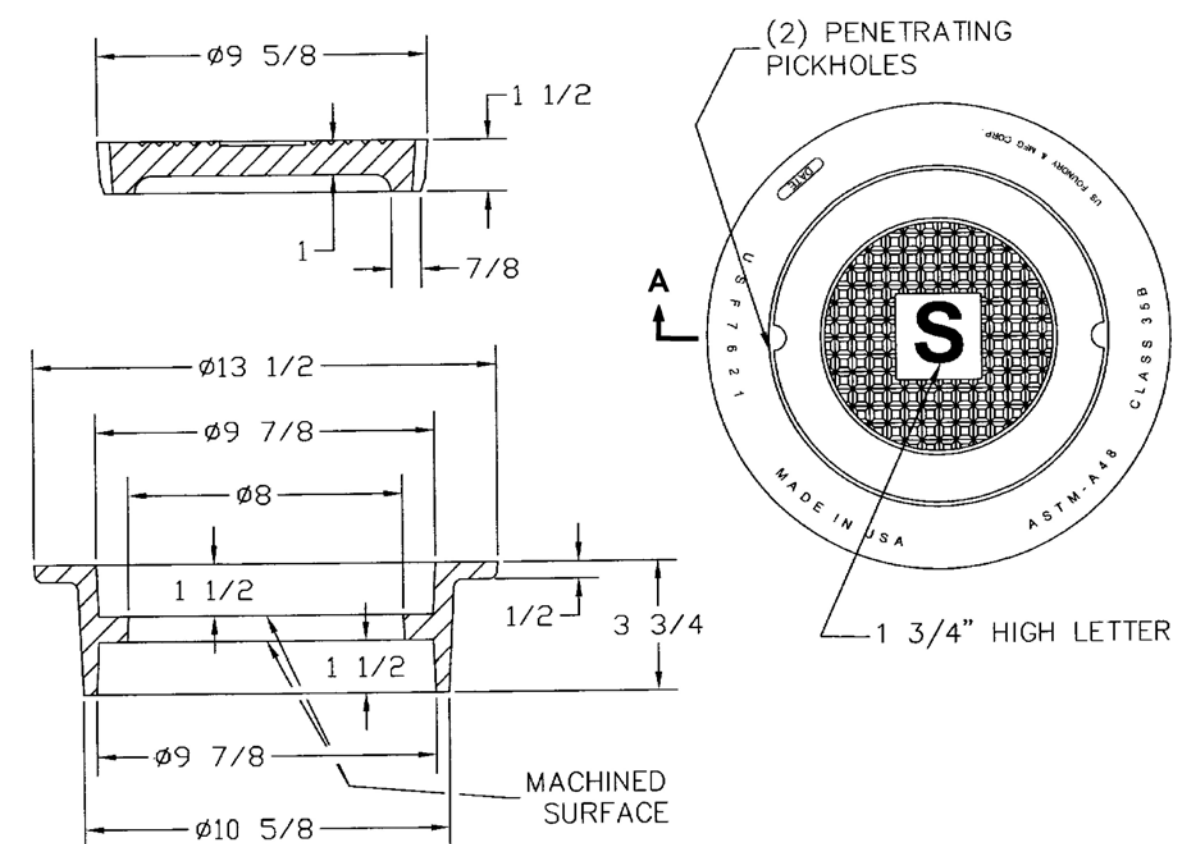
REVISIONS	BY	DATE	ENGINEERING DIVISION	GATE OR PLUG VALVE SETTINGS
	S.S.	04-2005	CITY OF POMPAÑO BEACH	
	T.W.	11-2007		
				DATE: MAY 2022
				DWG. NO. 103-1
			SCALE: N.T.S.	



SERVICE LATERALS WITH RISERS

ENGINEERING STANDARDS 2025

REVISIONS	BY	DATE	ENGINEERING DIVISION	SERVICE LATERALS
	T.W.	11-2007	CITY OF POMPAÑO BEACH	
	S.S.	01/27/12		
	S.S.	07/10/12		DATE: JUNE 2022
	S.S.	02/05/16		DWG. NO. 200-1
			SCALE: N.T.S.	



SEWER BOX AND COVER - HEAVY TRAFFIC

ENGINEERING STANDARDS 2025

REVISIONS	BY	DATE	ENGINEERING DIVISION	SEWER BOX AND COVER HEAVY TRAFFIC
	S.S.	12/06/18	CITY OF POMPAÑO BEACH	
				DATE: JUNE 2022
				DWG. NO. 210-3
			SCALE: N.T.S.	

This item has been digitally signed and sealed by
John E Flynn, P.E. on the date adjacent to the seal.

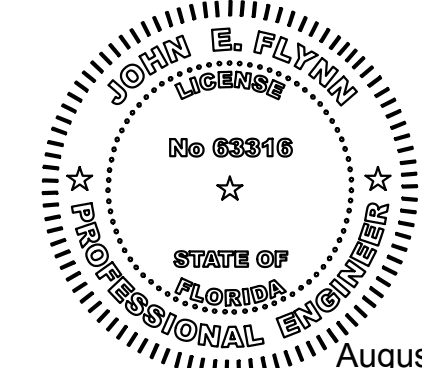
Printed copies of this document are not
considered signed and sealed and the signature
must be verified on any electronic copies.

GRACE ENGINEERING

Civil Engineering Consultants

17110 SW 64th Court
Southwest Ranches, Florida 33331

GraceEngineeringLLC@gmail.com
754.200.4534



JOHN E. FLYNN, P.E.
Florida License No. 63316
GRACE ENGINEERING, LLC
Certificate of Authorization No. 29280

Revisions:
DRC COMMENTS
08.26.2025

OWNER / DEVELOPER:
**RED LINK MANAGEMENT
CORP**
2750 NE 185TH ST. #304
AVENTURA, FLORIDA 33180

PROJECT:
**FOLIO 4942-03-27-0012
PROPOSED SHELL BLDG @
2100 WEST ATLANTIC BLDG**
2100 W ATLANTIC BLVD
POMPAÑO BEACH, FLORIDA 33069

Job Number: 24109.01
File name:
Issued Date: 04-23-2025
Drawn by: A.S
Checked by: T.R.

SHEET NAME

**WATER &
SEWER
DETAILS**

SHEET NUMBER

C-3.1